

**For Suppliers**

# **IMDS Operation Manual**

## **Version 2.1**

**November 25, 2005**

This manual is a revision incorporating changes to the data entry instructions with the introduction of IMDS Release 3.0, as well as additional information regarding Suzuki's internal procedures. Please discard the following manuals, as they have been integrated into this manual.

IMDS Data Operation in Second Step, Version 1.0

Before Using the IMDS, Version 1.01

IMDS User's Guideline, Version 1.01

IMDS Data Entry Manual, Version 1.1

IMDS FAQs, Version 1.01

IMDS Datasheets: "Reason of Denial" Message, Version 1.03

**Suzuki Motor Corporation  
Magyar Suzuki Corporation**

<b>1. IMDS Operational Plan</b> .....	<b>3</b>
1.1 Why Introduce the IMDS? .....	3
1.2 Scope of Survey .....	3
1.3 Survey Schedule .....	3
<b>2. Instructions for IMDS Data Entry</b> .....	<b>3</b>
2.1 IMDS Recommendations .....	4
2.2 Datasheet Configuration.....	4
2.3 Entering Individual Fields .....	5
2.3.1 Data Preparation for Materials .....	5
2.3.2 Entering Data on Substances .....	6
2.3.3 Data Preparation for Components and Semi-components .....	6
2.3.4 Entering Information on Recipient .....	7
2.4 Related Standards .....	8
<b>3. IMDS Procedures</b> .....	<b>9</b>
3.1 Handling of Subsidiaries.....	9
3.2 Subject Components .....	9
3.3 Handling of IMDS Data.....	9
3.4 Suzuki's Request for Preparation of Datasheets and their Submission.....	9
3.4.1 Reporting of Company Information, Client Managers, and Contact Persons.....	10
3.4.2 Data Check Procedures by Suzuki .....	10
3.4.3 Entry Reminder .....	11
3.4.4 Suzuki-furnished Components.....	11
3.4.5 Suzuki-furnished Materials.....	12
3.4.6 Data Entry Requests by E-mail.....	12
<b>4. "Reason for Denial" Message</b> .....	<b>14</b>
<b>5. Information</b> .....	<b>16</b>
5.1 FAQs.....	16
5.2 Before Using the IMDS.....	20
5.2.1 Outline of the IMDS.....	20
5.2.2 Registering Your Company on the IMDS .....	20
5.2.3 Taking the IMDS Training Course .....	21
5.2.4 Reference .....	21
<b>6. Contacts for Inquiries Concerning the IMDS</b> .....	<b>21</b>
6.1 IMDS Service Center.....	21
6.2 Suzuki Motor Corporation.....	21
6.3 Magyar Suzuki Corporation.....	21
<b>7. Revision of This Document</b> .....	<b>22</b>

**Attached Sheet**

## 1. IMDS Operational Plan

### 1.1 Why Introduce the IMDS?

The EU End-of-Life Vehicle (ELV) Directive 2000/53/EC, which came into force on October 21, 2000, imposes specific rules for materials used in motor vehicles.

- a. The use of Pb, Hg, Cd, and CrVI is prohibited (with the exception of the cases listed in Annex II, updated on July 2, 2002) in materials and components of vehicles put on the market after July 1, 2003.
- b. The type approval legislation requires 85% recyclability/95% recoverability, as recycling targets.

The enactment of Japan's Law for the Recycling of End-of-Life Vehicles (Automobile Recycling Law) has led to the following actions:

- a. Japan Automobile Manufacturers Association, Inc. (JAMA) is voluntarily working on restrictions for Pb, Hg, Cd, and CrVI equivalent to the EU ELV Directive.
- b. ASR (Automobile Shredder Residue) must be calculated according to a per-vehicle model.

To comply with the EU and Japan's Automobile Recycling Law, Suzuki has started surveying the materials in the components and indirect materials by employing the International Material Data System (IMDS) used by the global automotive industry.

### 1.2 Scope of Survey

- a. All motor vehicles distributed in the EU market.
- b. Motor vehicles and motorcycles of new models and fully-changed models distributed in the Japanese market.

### 1.3 Survey Schedule

- a. For new models and fully-changed models, a request will be made to enter all the part numbers into the IMDS according to each production parts list approximately one month before production trial of the model in question. All data entry must be completed approximately three months after request.
- b. For the parts whose part numbers are newly added or changed due to a drawing change after the data entry request described above, a request will be made when these part numbers are registered in the Production-BOM. All data entry must be completed by the implementation date of the design change.
- c. To confirm and ensure legal compliance, Suzuki may want to collect IMDS datasheets for a specific model and may advance the data entry deadline previously defined for components used in such model to obtain the data in good time. In such a case, Suzuki will notify the suppliers concerned of the subject components and the newly set deadline via e-mail.

Note: Regarding motor vehicles of new models and fully-changed models that are distributed in Japan, the amount of ASR that will be generated must be calculated prior to market launch. The datasheets must be sent in sufficient time for the data entry deadline.

## 2. Instructions for IMDS Data Entry

This section describes how to fill in datasheets for components to be supplied to Suzuki Motor Corporation (hereinafter referred to as "Suzuki") and Magyar Suzuki Corporation (hereinafter referred to as "MSC"). For items not provided in this manual, follow the instructions prescribed in the IMDS Recommendations and manuals supplied by EDS.

## 2.1 IMDS Recommendations

IMDS recommendations state the basic common rules for creating IMDS datasheets. The current titles are shown in Table 1, but as they are subject to change, you should visit the website for the latest information.

How to view recommendations on the web:

IMDS home page → System Login → Recommendation

**Table 1 IMDS Recommendations Title**

Number	Title
IMDS 001	General Structure
IMDS 002	"Flat Bill of Material" (FBOM)
IMDS 003	Rubber (Elastomer) Material Compositions
IMDS 004	Textiles
IMDS 005	Leather
IMDS 006	Automotive Lubricants
IMDS 007	Steel Flat Products (strips and sheets)
IMDS 008	Electroplated (electrolytically deposition) fasteners
IMDS 009	Components with electrolytically deposited coatings
IMDS 010	Plastic Material Compositions
IMDS 011	Nonmetallic Coatings
IMDS 012	Automotive Sealers and Adhesive Products
IMDS 013	Thermoplastic Elastomer (TPE) Material Compositions
IMDS 014	Automotive Lighting
IMDS 015	Automotive Steering Systems
IMDS 017	FRB Fibre Reinforced Plastic Products (Thermosets)
IMDS 018	Automotive Glazing Parts
IMDS 019	E/E (Electric/Electronic) components
IMDS 020	Thermal systems
IMDS 021	Spin-on Oil Filter
IMDS 022	Change Management

**Important precautions for data entry are explained below in detail.**

## 2.2 Datasheet Configuration

The datasheet configuration should be limited to that shown in **Table 2** below.

**Table 2 Datasheet Configuration**

Data type	Datasheet Configuration
Sending component datasheets	<p><b>[Component – Material – Substance]</b>  <b>[Component – Semi-component – Material – Substance]</b></p> <p>Components may have any number of layers, but the datasheet should be configured according to the actual configuration of the component. When components have been assigned Suzuki or MSC part numbers, define the component for each of such part numbers to the fullest possible extent.</p> <p>If approved in advance by Suzuki or MSC</p> <p>[Semi-component – Material – Substance] configuration can be used.            (e.g. unprocessed rough parts)</p>
Sending material datasheets	<p><b>[Material – Substance]</b></p> <p>If approved in advance by Suzuki or MSC</p> <p>[Semi-component – Material – Substance] configuration can be used.            (e.g. galvanized steel sheet)</p>

## 2.3 Entering Individual Fields

All data should be entered in English in one-byte alphanumeric characters. The system considers all entries using two-byte characters as errors.

Enter each field according to its classification as “Mandatory”, “Optional”, or “Unnecessary”. Fill them out following the respective instructions. When a field is indicated as “**Mandatory**”, you must enter it.

### 2.3.1 Data Preparation for Materials

Enter data on materials according to the instructions in **Table 3** below.

**Table 3 Materials**

Entry Field	Necessity	Instructions
<b>Name</b>	<b>Mandatory</b>	<b>Enter the symbol, grade, code, etc. specified in the norms/standards according to IMDS Recommendation 001 so that the materials can be identified.</b> Although there are two options of English (EN) or German (DE), English (EN) must be selected.
Trade Name	Optional	Enter the trade name of the material. Although there are two options of English (EN) or German (DE), English (EN) must be selected.
<b>Material No.</b>	<b>Mandatory in the case of metals that are subject to norms/standards</b>	<b>For metals, enter the symbol, grade and code specified in the norms/standards concerned.</b> e.g. MF Zn5-C, AC4C, SPCC
<b>Symbol</b>	<b>Mandatory in the case of high polymer materials such as plastic, rubber, and elastomer</b>	<b>In the case of high polymer materials such as plastic, rubber, and elastomer whose IMDS material classification starts with 5, enter the material symbols based on norms/standards such as ISO1043, ISO1629, ASTM D 1600 or Suzuki’s internal engineering standard SES N 3220.</b> e.g. PVC (Do not enter the > < symbols.)
<b>Classification</b>	<b>Mandatory</b>	<b>Select the appropriate one from the Search menu referring to Attached Sheet 2 “IMDS Material Classification”.</b> <b>However, solder is to be classified as follows to identify electronic or mechanical applications:</b> - <b>In the case of electronic circuit boards and electric components: “8.2 Electrics”</b> - <b>In the case of other components: “4.2 Other special metals”</b>
Norms/Standards	Optional	Enter the norms/standards on which the “Name” and “Material No.” above are based. If you use norms/standards codes such as JIS and ASTM, do not fail to enter this field.
In-house Norms	Optional	Enter the norms/standards on which the “Name” and “Material No.” above are based by referring to <b>Table 10</b> .
Supplier	Optional	Enter the name of the company that manufactures the material. (The name of the trading company is not acceptable.)
Remark	Optional	Each supplier can fill in Remarks as needed. Although there are two options of English (EN) or German (DE), English (EN) must be selected.
Development sample report	Unnecessary	
<b>Weight</b>	<b>Mandatory</b>	<b>Enter either the actually measured value or the design (drawing) value (if added under a component).</b>
<b>Portion</b>	<b>Mandatory</b>	<b>Select one of the three radio buttons: From-to, Fix, and Rest (if added under a semi-component).</b>

## 2.3.2 Entering Data on Substances

Prepare substance datasheets according to the following rules and Table 4.

Substances should be indicated in the following form:

(1) "Basic components of the material" + (2) "Duty-to-declare substance" + "(3) Substances other than (1) and (2)".

Basic component (1) is mandatory. However, Suzuki prohibits the use of 100%-content Wild Card (e.g. Misc.) whose CAS No. is system for Basic components (1).

If the material includes even a trace amount of "Duty-to-declare substance", do not fail to enter such substance. (Search for and select the appropriate name of substance by inputting names, synonyms or CAS numbers from the Search menu.)

Enter the substances (3) to the fullest possible extent. For these substances (3), you may enter Wild Card in the "Name" field.

(Note: Suzuki prohibits the use of 100%-content Wild Card. Try to limit the use of Wild Card to less than 10%-content.) Follow the rules in IMDS Recommendation 001 for details on using Wild Card.

**Duty-to-declare substances shall be in accordance with GADSL (Global Automotive Declarable Substance List). Visit the IMDS Website for GADSL information.**

IMDS home page → Public IMDS Pages → Lists

**Table 4 Chemical Substances**

Entry Field	Necessity	Instructions
Confidential	Optional	(1) "Basic components of the material" + (2) "Duty-to-declare substance" must not be marked as confidential.
Portion	Mandatory	Select one of the three radio buttons: From-to, Fix, and Rest.

## 2.3.3 Data Preparation for Components and Semi-components

Enter data on components according to the instructions in **Table 5** and **Table 6** and semi-components according to the instructions in **Table 7**.

**Table 5 Components**

Entry Field	Necessity	Instructions
Description	Mandatory	Your in-house Description is acceptable.
Part/Item No.	Mandatory	Your in-house Part/Item No. is acceptable.
Measured weight per item	Mandatory	Enter either the actually measured value or the design (drawing) value.
Tolerance	Optional	
Development sample report	Unnecessary	
Quantity	Mandatory	Indicate the number in use. (If added under a component.)

**Table 6 Mandatory Information to be Entered on Material Datasheet when Affixed under Component Datasheet**

Parts marking on polymeric parts	Mandatory if entry is requested by the system	In the case of high polymer materials such as plastic, rubber, and elastomer whose IMDS material classification starts with 5 with parts markings, enter the markings regardless of weight. However, for parts weighing less than 100 g and without such markings, entry is optional.
Application	Mandatory if entry is requested by the system	<ul style="list-style-type: none"> <li>- If a material contains any of the four substances (lead, hexavalent chromium, mercury, cadmium) prohibited under EU ELV Directive or nickel or PAHs prohibited under 76/769/EEC, follow the instructions that appear on the screen and select appropriate item(s) for each substance by referring to Attached Sheet 2.</li> <li>- The system may have default settings for application codes according to the material classification provided, however, make sure to check whether the default settings are appropriate.</li> </ul>
Recyclate information	Mandatory if entry is requested by the system	<p>Indicate whether parts contain any recyclates.</p> <p>If recyclate materials are used, enter the percentage of post-industrial or post-consumer recyclate content.</p>

For further information regarding **Table 6**, visit the IMDS Website to refer to IMDS Release 3.0 and the following documents:

IMDS home page → Public IMDS Pages → System → Release Notes  
 ApplicationID Handling  
 Recyclate Information  
 Parts Marking

**Table 7 Semi-components**

Entry Field	Necessity	Instructions
<b>Article Name</b>	<b>Mandatory</b>	The same as instructions for components in Table 5 above.
<b>Item/Material No.</b>	<b>Mandatory</b>	
Development sample report	Unnecessary	
<b>Weight</b>	<b>Mandatory</b>	Enter either the actually measured value or the design (drawing) value (if added to a component).

### 2.3.4 Entering Information on Recipient

The company name and ID number to which datasheets are to be sent are as follows:

#### When sending to Suzuki

<p><b>Company name: Suzuki Motor Corporation</b>  <b>Organizational unit: ---</b>  <b>Company ID: 22160</b></p>
---

#### When sending to MSC

<p><b>Company name: Magyar Suzuki Corporation</b>  <b>Organizational unit: ---</b>  <b>Company ID: 33325</b></p>
--

When sending component datasheets, enter fields according to the instructions given in **Table 8**. Be careful not to make any mistakes when entering mandatory fields such as part number, description, and supplier code.

**Table 8 Company Data (when sending component datasheets)**

Entry Field	Necessity	Instructions
<b>Part/Item No.</b>	<b>Mandatory</b>	<b>Enter the part number for which Suzuki or MSC requested entry.</b>
<b>Description</b>	<b>Mandatory</b>	<b>Enter the description for which Suzuki or MSC requested entry.</b>
Drawing No.	Unnecessary	
Drawing Dated	Optional	
<b>Drawing Change Level</b>	<b>Mandatory</b>	<b>Enter the ECN No. corresponding to the data you are sending. Leave this blank if the drawing is a new one and has not been modified.</b>
Report No.	Unnecessary	
Date of Report	Unnecessary	
Purchase Order No.	Unnecessary	
Bill of Delivery No.	Unnecessary	
<b>Supplier Code</b>	<b>Mandatory</b>	<b>Enter the supplier code stated in the entry request e-mail. Care should be taken, as Suzuki and MSC use different supplier coding systems.</b>
Reason for Denial	Unnecessary	
<b>Forwarding allowed</b>	<b>Mandatory</b>	<b>Select "Yes". In the case of Suzuki-furnished components, Suzuki will forward the datasheets to whom the parts are to be supplied.</b>

When sending material datasheets, enter fields according to the instructions given in **Table 9**.

**Table 9 Company Data (when sending material datasheets)**

Entry Field	Necessity	Instructions
<b>Material No.</b>	<b>Mandatory</b>	<b>Enter the material name for which Suzuki or MSC requested entry.</b>
<b>Name</b>	<b>Mandatory</b>	<b>Enter the material name for which Suzuki or MSC requested entry.</b>

\* For entries other than those shown above, refer to **Table 8**.

## 2.4 Related Standards

**Table 10** below shows typical Suzuki Engineering Standards (SES) related to materials. When entering norms/standards, however, enter those indicated in the drawings and those otherwise instructed.

**Table 10 Related Standards**

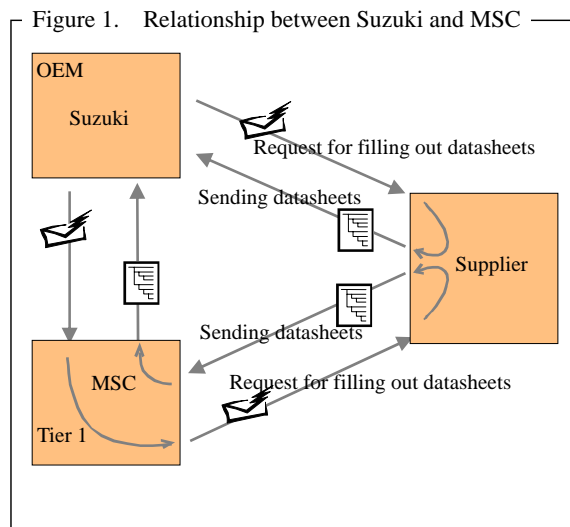
Standard No.	Standard Title
SES D 2204	Code of Zinc-containing Rustproof Coating
SES D 2211a	Symbols for Electroplated Coating of Zinc
SES N 3103b	Supplementary Code of Structural Steel
SES N 3121	Ferrous Castings (FC)
SES N 3122	Ferrous Casting Ductile
SES N 3123	FCV Cast Iron
SES N 3124a	Hot and Cold Rolled Steel Sheet and Steel Coil
SES N 3125a	Metal Coated Steel Sheet and Steel Coil
SES N 3131a	Aluminum Alloy Castings and Die Castings
SES N 3132	Flattened Aluminum Alloys
SES N 3220	Marking Method of Material Symbols for Polymeric Material Parts and Indication of Marking

## 3. IMDS Procedures

### 3.1 Handling of Subsidiaries

Suzuki considers Magyar Suzuki Corporation (MSC) to be a Tier 1 supplier of Suzuki in transferring IMDS data. For parts that MSC procures on its own, MSC will request the suppliers to enter data and collect the datasheets from them. MSC will then check the collected datasheets and determine whether the datasheets should be accepted or rejected. If accepted, the datasheets will be sent to Suzuki.

Note that some parts are procured independently by Suzuki and MSC using the same part number. In this case, the supplier will receive a data entry request from both Suzuki and MSC and is asked to send the datasheets to both companies.



### 3.2 Subject Components

- Request for data entry will be made on the basis of the part number for each component to be delivered.
- For a component with a color code, the request will be made on the basis of the part numbers without color codes. (Thus, the last three digits of the 15-digit part number will be -000.) Accountable substances are those which are prohibited by the Green Procurement Guideline, and Suzuki assumes that such accountable substances will not be affected by color difference. If the weight varies with color, please enter the value of the heaviest one as an example.

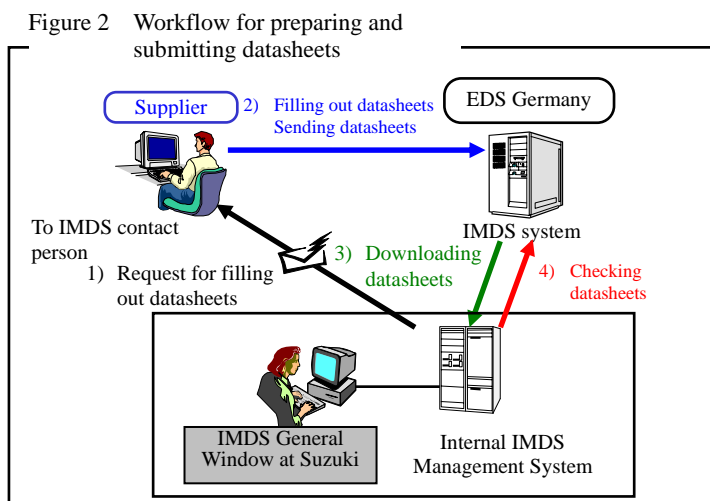
### 3.3 Handling of IMDS Data

- Suzuki will check the compliance with regulatory requirements based on IMDS data. Therefore, our suppliers are requested to take responsibility for sending us correct data, with the exception of the data for Suzuki-furnished components and materials.
- All IMDS data must be submitted no later than the final entry deadline so that the data may be summarized in order to check the compliance with regulatory requirements. We ask for your cooperation in observing the data entry deadline.

### 3.4 Suzuki's Request for Preparation of Datasheets and their Submission

The basic workflow for preparing and submitting datasheets is shown below (see **Figure 2**).

- 1) Request for data entry  
When a new product number is created, IMDS General Window at Suzuki sends an e-mail to the supplier's contact person(s) requesting that datasheets be filled out. A list of the part numbers, part names, deadline for data entry, etc. will be attached.
- 2) Filling out and sending datasheets  
The suppliers are requested to fill out the datasheets and send them to Suzuki.
- 3) Downloading datasheets  
Suzuki downloads the received datasheets to the Internal IMDS Management System.



#### 4) Checking datasheets

Suzuki checks the datasheets in Suzuki's Internal IMDS Management System. Suzuki will not accept datasheets on components for which it has not requested data, or datasheets that do not comply with this manual.

### 3.4.1 Reporting of Company Information, Client Managers, and Contact Persons

As illustrated in **Figure 2**, Suzuki will automatically send IMDS data entry/modification requests through Suzuki's Internal IMDS Management System.

Enter the information registered at IMDS, such as the company ID, client managers, and contact persons, in the EXCEL file distributed by the Green Procurement Department of Suzuki and send it back to the department. Without this information, Suzuki cannot make IMDS data entry/modification requests to our suppliers, thus affecting Suzuki's normal IMDS operations.

Purchasing Planning Department/Green Procurement Promotion Staff  
E-mail address: [greenproc@hhq.suzuki.co.jp](mailto:greenproc@hhq.suzuki.co.jp)  
Telephone: +81-53-440-2637

This contact person will be responsible for internally providing the IMDS-related information received from Suzuki. The contact person need not be the one who is registered on the IMDS system.

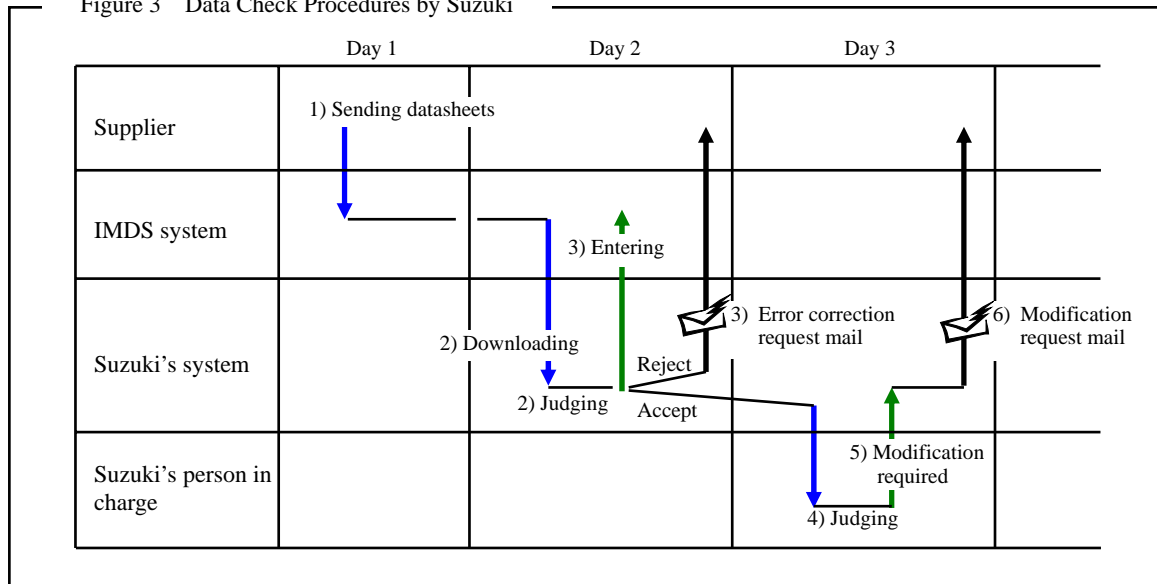
### 3.4.2 Data Check Procedures by Suzuki

Suzuki's Internal IMDS Management System and a person in charge will check the datasheets received according to the procedures shown in **Table 11** and **Figure 3**.

**Table 11 Data Check Procedures by Suzuki**

Day 1	1) The day the supplier sends datasheets
Day 2	2) The datasheets received the previous day are collectively downloaded into Suzuki's Internal IMDS Management System and whether to accept or reject each one is determined. 3) The accept/reject status is entered in the status field on IMDS. For rejected datasheets, the reason for rejection is entered in the "Reason for Denial" field on IMDS and is notified to the supplier via e-mail. See <b>Tables 12</b> and <b>13</b> for details of the e-mail format.
Day 3	4) Accepted datasheets are checked by the person in charge, and whether any modification is needed is determined. 5) The part number of the datasheet that is subject to modification will return to the "not received" status on the system. 6) The reason for modification is notified to the supplier via e-mail through the system. See <b>Tables 12</b> and <b>13</b> for details of the e-mail format.

**Figure 3 Data Check Procedures by Suzuki**



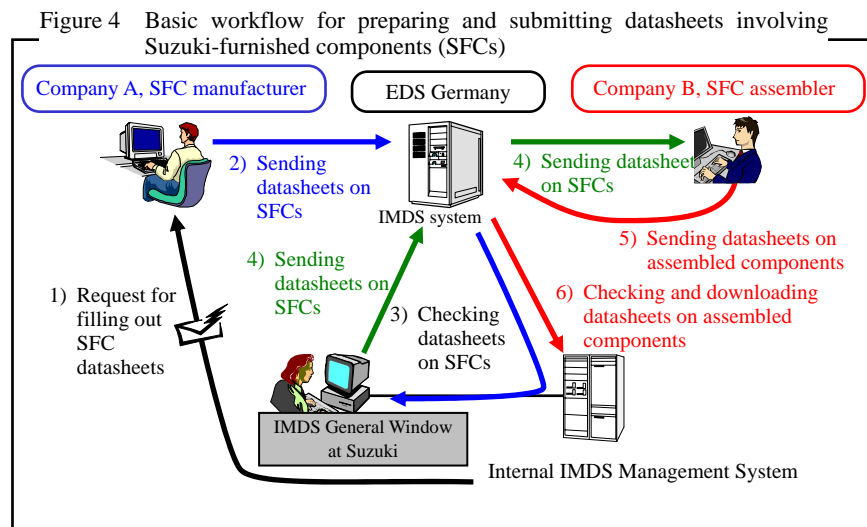
### 3.4.3 Entry Reminder

If a certain part number has the “not received” status, a reminder e-mail will be sent twice a week (Tuesday and Thursday) from 2 weeks before the entry deadline until the datasheet is finally accepted. The “not received” status refers to the situation where datasheets are rejected by Suzuki’s Internal IMDS Management System during the procedures in 3.4.2 above, or Suzuki’s person in charge judges that data need to be modified. See **Tables 12** and **13** for details of the e-mail format.

### 3.4.4 Suzuki-furnished Components

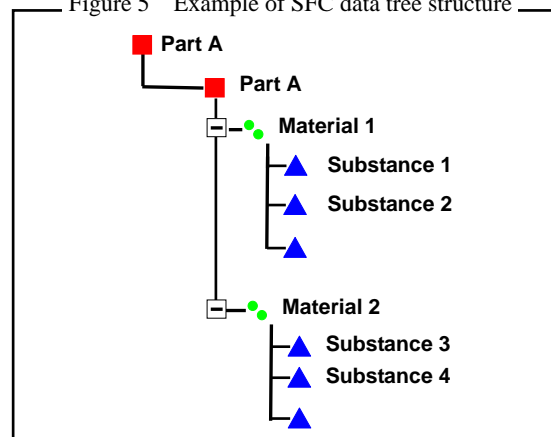
The basic workflow for preparing and submitting datasheets involving Suzuki-furnished components (hereinafter referred to as “SFC”) is shown below (see **Figure 4**).

- 1) Via e-mail, Suzuki requests the supplier manufacturing SFCs (hereinafter referred to as “Company A, SFC manufacturer”) to enter data on SFCs into datasheets.
- 2) Company A, SFC manufacturer fills out the datasheets and sends them to Suzuki.
- 3) & 4) Suzuki checks the SFC datasheets and sends them to the supplier assembling such SFCs into other products (hereinafter referred to as “Company B, SFC assembler”).
- 5) Company B, SFC assembler, is requested to prepare datasheets on such assembly components on the basis of the SFC datasheets and the data on their own components and sends them to Suzuki.
- 6) Suzuki checks the received datasheets of such assembly components and downloads them to the Internal IMDS Management System.



Note that Suzuki may send datasheets in the following tree structure for Suzuki-furnished parts with dummy components attached as shown in **Figure 5**.

Figure 5 Example of SFC data tree structure

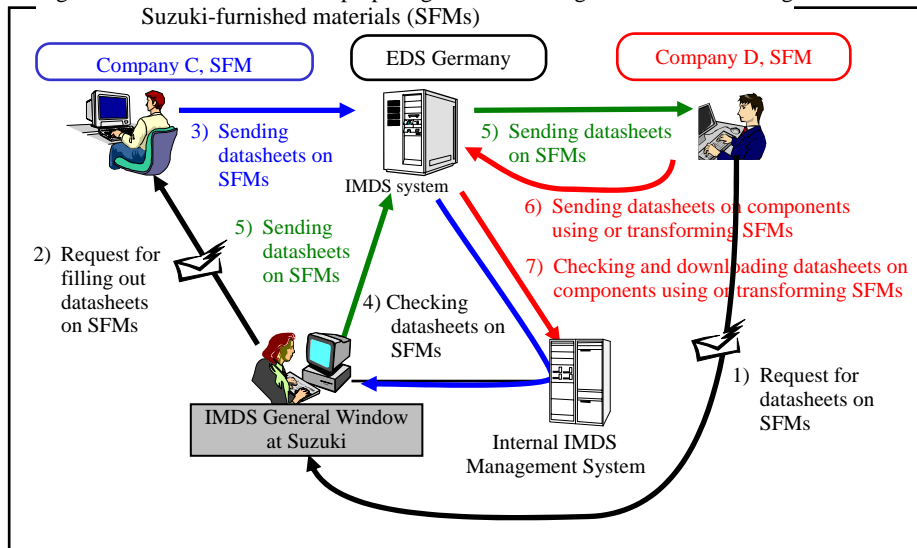


### 3.4.5 Suzuki-furnished Materials

The basic workflow for preparing and submitting datasheets involving Suzuki-furnished materials (hereinafter referred to as “SFM”) is shown below (see **Figure 6**).

- 1) If Suzuki supplies materials to its suppliers, the supplier using such materials (hereinafter referred to as “Company D, SFM user”) requests that Suzuki provides the datasheets on such SFMs.
- 2) Via e-mail, Suzuki asks the suppliers manufacturing such SFMs (hereinafter referred to as “Company C, SFM manufacturer”) to fill out datasheets on the SFMs.
- 3) Company C, SFM manufacturer, is requested to prepare datasheets on the SFMs and sends them to Suzuki.
- 4) & 5) Suzuki checks the SFM datasheets and sends them back to Company D, SFM user.
- 6) Company D, SFM user, is requested to prepare datasheets on its components based on the SFM datasheets and sends them to Suzuki.
- 7) Suzuki checks the datasheets on components using or transforming the SFMs sent by Company D, SFM user, and downloads them to the Internal IMDS Management System.

Figure 6 Basic workflow for preparing and submitting datasheets involving Suzuki-furnished materials (SFMs)



### 3.4.6 Data Entry Requests by E-mail

Requests for data entry into the IMDS system will be made to the supplier via e-mail according to the classification in **Table 12**. Each e-mail will have an attached list, providing the supplier with information such as classification, part numbers, part names, etc. (see **Table 13**).

**Table 12 Requests Made via E-mail**

Request Classification	Description
1) New data entry	For parts/materials whose data entry is newly requested, including those whose part numbers have been changed as a result of design change.
2) Earlier deadline	For parts/materials whose deadlines have been changed (brought forward) to sum-up IMDS data for specific models in which such parts/materials are used.
3) MDS modification	For parts/materials whose datasheets have been “accepted” by Suzuki’s Internal IMDS Management System and should be modified upon judgment by Suzuki’s staff.
4) MDS correction	For parts/materials whose datasheets have been “rejected” upon judgment by Suzuki’s Internal IMDS Management System according to this “Manual”, thus requiring data correction.
5) Approaching deadline	For parts/materials whose deadline is almost reached.
6) Reminder	For parts/materials whose deadline has already passed.

**Table 13 An Example of E-Mail Attached List**

REQUEST CLASSIFICATION	DEADLINE (YYYY.MM.DD)	SUPPLIER CODE	PART NO.	PART NAME	MDS RECEIVING COMPANY ID	MDS RECEIVING COMPANY NAME	REASON FOR DINIAL / MODIFICATION
NEW DATA ENTRY	2004.09.30	XY00	01411-1111-000	BOLT A			
EARLIER DEADLINE	2004.09.01	XY00	01411-22222-000	BOLT B			
MDS MODIFICATION	2004.06.01	XY00	01411-33333-000	BOLT C			"Please modify the ..."
MDS CORRECTION	2004.06.01	XY00	01411-44444-000	BOLT D			TOTAL=01 01411-06123-000:PN1
APPROACHING DEADLINE	2004.09.01	XY00	01411-55555-000	BOLT E			
REMIDER	2004.09.01	XY00	01411-66666-000	BOLT F			

## 4. "Reason for Denial" Message

IMDS datasheets will be rejected if they do not comply with the instructions given in "2. Instructions for IMDS Data Entry", with a message stating the reason for rejection appearing in the "Reason for Denial" field on the Company Data window.

Rejected datasheets must be corrected by referring to the "Reason for Denial" message in **Tables 14 and 15** and then be resent to us.

**Table 14 Message Format of "Reason for Denial" on Company Data Window**

TOTAL: nn	Error reason 1	Error reason 2	Error reason 3	Error reason 4	Error reason 5
-----------	----------------	----------------	----------------	----------------	----------------



Total number of errors



Location of error + Error code (See **Table 15**)  
\* The system shows up to five errors.

**Table 15 Error Code Description**

Error code	Error description	Error reason indicated in the message
PN1	Delivered Part No. entered in Company Data is incorrect. - Part No. is incorrect. or - The datasheet is not for a part number for which Suzuki has requested data entry.	Top layer Part/Item No.: PN1
PN2	Description in Company Data, which is a mandatory entry field, is not entered.	Top layer Part/Item No.: PN2
PN3	Supplier code entered in Company Data is not entered or is incorrect. - Supplier Code, which is a mandatory entry field, is not entered. or - This is not the supplier code that we assigned to you.	Top layer Part/Item No.: PN3
PC1	Part/Item No. of component datasheet is not entered or is incorrect. - Part/Item No., which is a mandatory entry field, is not entered. or - Part/Item No. is incorrect. (Applicable only to datasheets created at Suzuki. Not applicable to suppliers.)	Top layer Part/Item No.: PC1
PM1	For high polymer materials such as plastic, rubber, and elastomer that start with 5 in the IMDS material classification, it is mandatory to enter the symbol, but it is not entered.	Material Name: PM1
PM2	The application code is not entered in the correct manner.	Material Name: PM2
PM3	In the material datasheet, Wild Card (e.g. Misc.) is used whose content is 100%. As substances in materials, Suzuki prohibits the use of 100%-content Wild Card (whose CAS No. is system). Examples of Wild Card: Misc.                      Flame retardant                      Further additive Impact modifier                      Inorganic Ingredient                      not yet specified Organic ingredient                      Pigment portion                      Plasticizer	Material Name: PM3

**Table 15 Error Description (Continued)**

Error code	Error description	Error reason indicated in the message
PM4	If the supplier keeps substances contained in Suzuki-furnished components* <sup>1</sup> and Suzuki-furnished materials* <sup>2</sup> confidential, Suzuki will have difficulty transmitting datasheets to such supplier. For this reason, Suzuki prohibits suppliers who supply products containing Suzuki-furnished components or Suzuki-furnished materials from keeping substances contained in such components and materials confidential.  *1 Components furnished by Suzuki to suppliers *2 Materials furnished by Suzuki to suppliers	Material Name: PM4
PS1	- Since you have not entered or have incorrectly entered an application code for a material that requires the application code to be entered, the system has interpreted that you have registered one of the four substances regulated by the EU ELV Directive (Pb, Hg, Cd, or Cr <sup>6+</sup> ).  or - You have entered an application code for a material that requires the application code to be entered, but the validity of exemption for such substance has expired.	CASNO: PS1
PS2	Prohibited substances other than the four EU-regulated substances are registered.	CASNO: PS2
PR1	It is not acceptable to place both a material datasheet and a substance datasheet on the same layer directly under a material datasheet.	Material Name: PR1
PR2	It is not acceptable to place a substance datasheet directly under a component datasheet. Please design your datasheets in a "component-material-substance" configuration.	Part/Item No.: PR2
PR3	It is not acceptable to place a substance datasheet directly under a semi-component datasheet. Design your datasheets in a "semi-component-material-substance" configuration.	Part/Item No.: PR3
PR4	It is not acceptable to place semi-component datasheets in three consecutive layers. Semi-component datasheets are limited to only one or two layers.	Part/Item No.: PR4
PR5	The datasheets do not contain any material layer. Always design your datasheets in a "component-material-substance" configuration or "material-substance" configuration.	Top layer Part/Item No.: PR5
MM1	The Name field in the material datasheet, which is a mandatory entry, is not entered.	Material No.: MM1
MM2	A supplier code beginning with a letter other than Z is used when sending material datasheets. Suzuki accepts only those datasheets whose supplier codes begin with Z.	Material No.: MM2

## 5. Information

### 5.1 FAQs

This FAQ compiles the major questions and answers encountered at our briefing on the IMDS to suppliers as well as those in later inquiries from suppliers.

#### 1) Data entry

No	Questions	Answers
1	Material No.: How should I enter the number for materials for which there is no standard or which are based on in-house standards?	You may either enter the material number based on your in-house norms/standards, if any, or not enter the field to leave it blank.
2	Symbol: How should I enter the symbol for materials for which there is no standard or which are based on in-house standards?	In the case of high polymer materials such as plastic, rubber, and elastomer, enter the symbol based on official norms/standards such as ISO1043, ISO1629, ASTM D 1600 or Suzuki's internal engineering standard SES N 3220. For other materials (such as metallic materials), you may leave this field blank.
3	How should I enter material symbols for composite materials?	For high polymer materials such as plastic, rubber, and elastomer, ISO1043, ISO1629, ASTM D 1600, and SES N 3220 show how to indicate them. Be careful not to forget to enter this field using such symbols.
4	We have prepared datasheets for other customers involving only the four EU-regulated substances. Could we use such common information for this?	You may use datasheets for other customers as long as they include all the substances subject to Suzuki's survey. If the material contains subject substances other than EU-regulated substances, enter them also.
5	For some iron and steel materials, the names, symbols, and material numbers happen to be the same. Should I still enter them all?	Entering the name and material number is mandatory, so do not fail to enter both of them. For the material symbol, entry is mandatory for high polymer materials such as plastic, rubber, and elastomer. For iron and steel materials, entry of the material symbol is not absolutely necessary as long as the material number is indicated.
6	For compounds such as lead oxide, should I indicate the weight for each element?	The weight of the compound will do.
7	In the case of an iron product or material that does not contain any other basic substance, may I register it as "Misc. 100%"?	If the main material is iron, iron is the main substance, so you cannot state "Misc. 100%". Enter the portion of other substances contained in the iron or iron material. For standard materials, reference to material sheets published by IMDS-Committee is also accepted.
8	In the case of a material that contains hexavalent chromium, may I enter only the portion of hexavalent chromium and group all other constituents as "Miscellaneous"?	No, because that will lead to a higher Misc. content. In the case of zinc chromate, register the content of zinc and hexavalent chromium, which are the main components.
9	If we changed from hexavalent chromium to trivalent chromium, how should I register trivalent chromium?	Register the chemical used in the trivalent chromium.
10	Component: The tree structure shown in the drawing is slightly different from the one we use in our company. Which structure should I use?	In principle, the supplier may use its own structure, but for those components that are assigned Suzuki part numbers, please make them match with the component configuration in the drawing.
11	What is the definition of "recyclate" mentioned in the recycling information?	We assume, for example, cases where we recycle production mill ends and products (e.g. by shredding and reusing bumpers).

## 1) Data entry (Continued)

No	Questions	Answers
12	Is the entry of information on the contact person mandatory in the supplier information?	If the contact person is not entered, the datasheets cannot be sent outside of the company. Select any contact person from the registered contact person list in the pull-down menu.
13	Component; Company Data: Couldn't I use our own part names and part numbers?	You may use them when creating an ingredients chapter. However, you must enter OEM part names and part numbers in the company data of the recipient information. This way, your part names and numbers will be replaced by OEM part names and numbers on the OEM side upon reception, for level-one components. The in-house part names and part numbers will remain unchanged on the sent list on the side of the sender (the supplier).
14	Company Data: Which drawing change level should I enter? What if I find out that the drawing has just been changed while I'm entering data in this field?	Enter the one that corresponds to the component that you are entering.
15	Sometimes components and materials happen to be in parallel (at the same level). Is this all right?	Suzuki will approve such datasheets, too, but we would appreciate it if you could try to match levels as much as possible.  Note that datasheets will be rejected if materials and substances are arranged in parallel.

## 2) Operation

No	Questions	Answers
1	Could I also enter data for mass-production components for which entry has not yet been requested?	Suzuki's Internal IMDS Management System is designed to reject all datasheets except those for part numbers that we ask you to enter data for (to prevent erroneous entry of part numbers). Please enter only the data for the part numbers that we have requested be entered.
2	At which phase of development are we supposed to enter data into the IMDS? From the mass-production phase?	For new models, we may ask you to enter data from the production prototype phase.
3	Some components obviously do not contain any regulated substances. May I omit entering the data for them?	Please enter the data for all components that we ask you to enter. This is because we need material and weight data to calculate the recycling rate and amount of ASR.
4	Some furnished components change in weight after processing, but we cannot alter the data on supplied components. What should I do?	You can change the data by copying it and then converting into your data.
5	If data that I've sent had errors, how will I be informed of such errors?	For component data containing errors, we will reject datasheets and will inform you by sending an e-mail indicating the part number and reasons for denial.
6	When are we supposed to receive your datasheets on furnished components and materials?  Do you inform us of such transmission? (Or should we check daily on the IMDS screen?)	For furnished components, entry requests are to be made 2 weeks earlier than Assy parts. We send reminder e-mail to the supplier through our system on an ongoing basis. If you cannot meet the entry deadline set by Suzuki, please inform us of the part number(s) in question.  A datasheet transmission will be notified via e-mail through our system.

## 2) Operation (Continued)

No	Questions	Answers
7	In case hazardous substances are reduced through process changes, when should we enter the data into the IMDS? Will you issue a request for IMDS data entry?	Suzuki will not issue any request. Please finish entering the data into the IMDS before you deliver the component concerned.  Regarding reduction of hazardous substances, you must first ask Suzuki for approval by submitting a prescribed "Green Procurement Switchover Application Form".
8	For some service parts for which we receive orders only once or twice a year, we have often finished production and we deliver them from our stock. In such cases, we might have difficulty getting information on their materials. Should we meet your requests even in such a case?	We have not yet started surveying service parts. If the ELV directive includes them in future, we may request that you enter data for them as well.
9	I would appreciate it if you could include in your request not only the part number but also the drawing change level.	It is not possible to do this with Suzuki's Internal IMDS Management System as currently designed.
10	Are the manuals available in English?	English manuals will be released every time they are revised, although they may come out later than the Japanese version.
11	Is taking the IMDS training course mandatory?	Yes, we would really like you to take the training course, since it is very effective for improving your knowledge of the IMDS, offering sessions where you create data by actually using PCs, etc. Note that, when you make inquiries to the EDS Service Center, you (or other members) are supposed to have taken the training course. If you download such manuals as the "IMDS Training Guide" from the IMDS web-site and read them prior to taking the course, it will help you to better understand what is being taught.

## 3) Registering Company Data

No	Questions	Answers
1	We have different IMDS company IDs in Japan and Europe. Is it possible to send datasheets using one and the same supplier code from different IMDS company IDs?	Suzuki's Internal IMDS Management System allows you to register more than one IMDS company ID per supplier code. If you wish to register two or more IDs, please notify us of your representative IMDS company ID. When we contact the suppliers, we will communicate via e-mail with the contact person registered in the representative IMDS company ID. With this in mind, please choose your representative IMDS company ID. If you have one company ID and more than one organization ID, you can register only one IMDS company ID.
2	Can I change contact persons?	Yes, you may do so at any time. However, please let us know as quickly as possible by submitting the prescribed form.
3	Can we designate three or more contact persons? If we can, could you send your e-mails to all three?	In your report to Suzuki, please limit them to two.  You may register any number of contact persons you like when registering them online at the IMDS.  However, Suzuki's Internal IMDS Management System is designed to limit request messages to a supplier to only two persons (one being the addressee and the other being a CC). Therefore, please limit the number in your report to two.
4	We have several contact persons in our company. Which ones should we select as your contact persons?	Please select two from among those capable of ensuring the following tasks in your company: 1) Suzuki's requests for data entry 2) Requests for correction if your data contains errors 3) Inquiries about datasheets you have prepared

### 3) Registering Company Data (Continued)

No	Questions	Answers
5	I have encountered difficulties registering our company data.	You can download the "Training Manual" (English Version) from the IMDS site. Try registering again following the instructions in the manual. If you still have any questions, call the EDS Service Center and ask them while displaying the actual registration page on your screen.
6	Must a client manager be an executive?	Not necessarily. There is no rule about that. Select someone you think fits the role of client manager. As for the function of a client manager, see ' <b>5.2.2 Registering Your Company on the IMDS</b> '.
7	May a client manager serve concurrently as a contact person?	Yes
8	How should I register the second client manager?	Log onto the IMDS as client manager, and create a new user by following the "Administration" → "User " menus. Then define the user approval profile of that user as a client manager. From then on, he/she will be recognized as a client manager.

### 4) IMDS Release 3.0

No	Questions	Answers
1	Because datasheets of Suzuki-furnished components do not comply with IMDS Release 3.0 (due to changes in application code, recycle information and parts marking), an error message appears and new datasheets cannot be created.	If you have such datasheets, inform the IMDS General Window of the part number(s) in question. We will request Suzuki-furnished components manufacturers to re-enter the data in accordance with IMDS Release 3.0 specifications.
2	How should we handle the items (EUELV=, MARK=) that we used to enter in a "Remark" field? Should they be deleted?	Our internal system designed for IMDS Release 3.0 no longer refers to these items (EUELV=, MARK=) entered in a "Remark" field. You do not have to delete them, as they will not cause any problems.
3	A desired application code does not show.	The combination of material classification and substance may be incorrect or the datasheet may have been improperly configured in the first place. Please visit the IMDS Website and download the information (EXCEL file) found in "News" [2005/06/13] to learn about application coding conditions according to combination of substances and material classification.
4	We use motorcycle components that contain lead banned under the EU ELV Directive, but there is no applicable application code for them.	Select "Other application." Suzuki's Internal IMDS Management System checks the model in which a particular component is used and its destination with the datasheet. Datasheets that do not conform to laws and regulations or Suzuki's internal standards will be rejected.
5	Only one application code is available.	That is because you are using only one material datasheet which must have been divided into more than one datasheet. Use a separate datasheet for each material.
6	Rubber elastomer parts weighing more than 200 g have no parts marking on them, and "No" cannot be selected in a parts marking field.	Select "Not applicable" tentatively. Contact the design department at Suzuki, as Suzuki will determine whether parts marking should be required.
7	A plastic with parts marking and another plastic without parts marking exist in one component. Which parts marking should be selected in this case?	Select "No", if one component datasheet has plastics with and without parts marking. Normally, component data must be created separately for materials with and without parts marking so that an appropriate parts marking may be selected for each component.

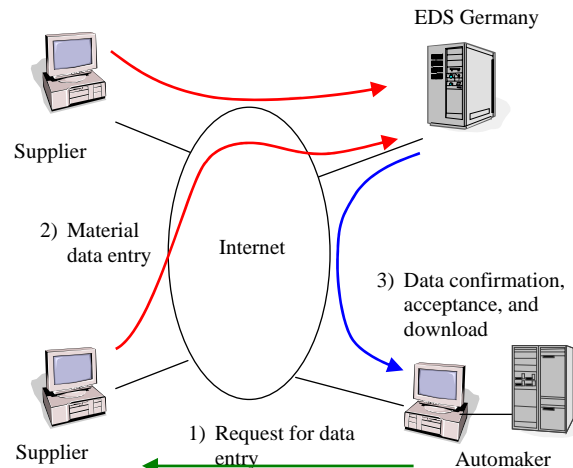
## 5.2 Before Using the IMDS

### 5.2.1 Outline of the IMDS

The IMDS was jointly developed by major European automakers and the IT firm, EDS Germany. By using this system, automakers and suppliers can collect through the Internet all information needed on materials.

For further information on the IMDS, please refer to the IMDS Website:

<http://www.mdsystem.com>



### 5.2.2 Registering Your Company on the IMDS

Suppliers preparing to use the IMDS are requested to follow the procedures shown below.

#### 1) Assignment of Client Manager(s) and Contact Person(s)

##### <Client Managers>

Client manager(s) are users who are given management authority as administrators of IMDS users in their own company. The major functions of a client manager are as follows:

1. To manage IMDS users within their own company (addition, deletion, modification of users).
2. To manage the IMDS data sheets within their own company.
3. To act as a window for the IMDS Service Center as a representative of their company.

A company must have at least one client manager, but it is recommended that two or more be assigned for their own convenience.

##### <Contact Persons>

The functions of a contact person are as follows:

1. To be responsible for creating IMDS data
2. To act as a window to communicate with persons outside of the company

A company must have at least one contact person, but it is recommended that two or more contact persons be assigned to ensure that you will be able to meet Suzuki's requests and respond to its inquiries when one of them is out of the office, on a business trip, or the like.

A client manager may serve concurrently as a contact person.

#### 2) Registering Company Information, Client Managers and Contact Persons

You need to register online the information indicated below at the IMDS site. The number of client managers and contact persons you may register on this initial online registration is only one for each. If you want to register more than one client manager or contact person, first register the client manager and contact person representing others.

IMDS home page → Public IMDS Pages → System → Online Registration

1. Company information
2. Client manager and contact person

After registration is completed, the client manager will receive an e-mail with his/her user password and ID.

Using his/her user ID and password, the client manager must log onto the IMDS network and confirm the company ID from the system management menu (the IMDS company ID will not be informed by e-mail).

To register additional client managers and contact persons, the first client manager should log onto the IMDS and register them from the Administration menu.

### 5.2.3 Taking the IMDS Training Course

Suppliers who are using the IMDS for the first time are requested to take the IMDS training course organized by the IMDS Service Center to learn how to use the IMDS efficiently. For subscription and further information, please refer to the IMDS Website.

IMDS home page → Public IMDS Pages → Training

### 5.2.4 Reference

Frequently asked questions and answers are posted on the IMDS Website.

IMDS home page → Public IMDS Pages → FAQ

Since the FAQ section contains very useful information on the IMDS, it is strongly recommended that you go through these pages before taking other steps. You can also download various manuals for IMDS from the site:

<An example of manuals available for download>

Training Manual (PDF 3.9 MB)

## 6. Contacts for Inquiries Concerning the IMDS

If you have questions concerning the IMDS system, substances or training, please contact the IMDS Service Center via e-mail or telephone.

If you have questions concerning this manual, IMDS data entry request or materials, please contact the responsible persons given in section 6.1, 6.2 or 6.3 via e-mail or telephone.

### 6.1 IMDS Service Center

Region	E-mail	Telephone
Japan	jpimdshd@eds.com	+81-3-3797-4212
Europe	imds-eds-helpdesk@eds.com	+36-1-298-1536
Italy	imds-fiat@eds.com	+39-80-38-53-116
USA	imds-eds-helpdesk-nao@eds.com	+1-972-403-3607
South Korea	imdsk.helpdesk@eds.com	+82-2-3782-0827 & -0828

### 6.2 Suzuki Motor Corporation

Project Group Name	Department	Name/E-mail	Telephone
IMDS General Window (General services for IMDS)	Engineering Administration Department	Tatsuo Oohazama imdswindow@hhq.suzuki.co.jp	+81-53-440-2446
Contact for substances (Judging compliance of substances with laws and regulations)	Development Department	Hidehiko Amano imds substance@hhq.suzuki.co.jp	+81-53-440-2539
Green Procurement Promotion (Suzuki-furnished components and materials)	Purchasing Planning Department	Yutaka Hirao greenproc@hhq.suzuki.co.jp	+81-53-440-2637

### 6.3 Magyar Suzuki Corporation

Project Group Name	Department	Name/E-mail	Telephone
IMDS General Window (General services for IMDS)	QA Department	Aliz Zilahi imdswindow@suzuki.hu	+36-33-541-254
	Purchasing Department	Csaba Godri imdswindow@suzuki.hu	+36-33-541-211

## 7. Revision of This Document

The supplier is requested to ensure that their own suppliers are well informed of this manual.

With the modification of the IMDS system itself and its management at Suzuki, this document may be revised. Notification will be made to suppliers for every such revision.

### Revision History

Version	Date	Person in Charge	Description
1.0	2003.12.18	H. Kato	1st available version in Japanese
1.01	2004. 6.1	H. Kato	Text revised or added concerning materials, substances, company data entry Text revised or added concerning Suzuki-furnished components and materials Text revised or added concerning registering IMDS company data Error codes added for "Reason for Denial"
2.0	2005. 9.1	T. Oohazama	Changes added in the entry instructions for IMDS Release 3.0 and supplementary information added concerning Suzuki's internal procedures. The following manuals are integrated into this manual: IMDS Data Operation in Second Step, Version 1.0 Before Using the IMDS, Version 1.01 IMDS User's Guideline, Version 1.01 IMDS Datasheets: "Reason of Denial" Message, Version 1.03 IMDS FAQs, Version 1.01
2.1	2005.11.25	T. Oohazama	Text deleted concerning the definition of impurities. Changes added in Attached Sheet 2 with the Application ID alteration.

## Attached Sheet 1

### IMDS Material Classification (Items colored in gray cannot be selected.)

Material Classification Description	
0	Undefined
1	Steel and iron materials
1.1	Steels / cast steel / sintered steel
1.1.1	unalloyed, low alloyed
1.1.2	highly alloyed
1.2	Cast iron
1.2.1	Cast iron with lamellar graphite / tempered cast iron
1.2.2	Cast iron with nodular graphite / vermicular cast iron
1.2.3	Highly alloyed cast iron
2	Light alloys, cast and wrought alloys
2.1	Aluminium and aluminium alloys
2.1.1	Cast aluminium alloys
2.1.2	Wrought aluminium alloys
2.2	Magnesium and magnesium alloys
2.2.1	Cast magnesium alloys
2.2.2	Wrought magnesium alloys
2.3	Titanium and titanium alloys
3	Heavy metals, cast and wrought alloys
3.1	Copper (e.g. copper amounts in cable harnesses)
3.2	Copper alloys
3.3	Zinc alloys
3.4	Nickel alloys
3.5	Lead
4	Special metals
4.1	Platinum / rhodium
4.2	Other special metals
5	Polymer materials
5.1	Thermoplastics
5.1.a	filled Thermoplastics
5.1.b	unfilled Thermoplastics
5.2	Thermoplastic elastomers
5.3	Elastomers / elastomeric compounds
5.4	Duromers
5.4.1	Polyurethane
5.4.2	Unsaturated polyester
5.4.3	Others duromers
5.5	Polymeric compounds (e.g. inseparable laminated trim parts)
5.5.1	Plastics (in polymeric compounds)
5.5.2	Textiles (in polymeric compounds)
6	Process polymers
6.1	Lacquers
6.2	Adhesives, sealants
6.3	Underseal
7	Other materials and material compounds (scope of mixture)
7.1	Modified organic natural materials (e.g. leather, wood, cardboard, cotton fleece)
7.2	Ceramics / glass
7.3	Other compounds (e.g. friction linings)
8	Electronics / electrics
8.1	Electronics (e.g. pc boards, displays)
8.2	Electrics
9	Fuels and auxiliary means
9.1	Fuels
9.2	Lubricants
9.3	Brake fluid
9.4	Coolant / other glycols
9.5	Refrigerant
9.6	Washing water, battery acids
9.7	Preservative
9.8	Other fuels and auxiliary means

Attached Sheet 2

Application IDs for IMDS Release 3.0

APPLICATION
Lead used as/in
Alloying element in steel for machining purposes or galvanised steel
Alloying element in aluminium for machining purposes
Alloying element in copper
<b>Alloying element in bearing shells and bushes</b>
Lead and its compounds used as/in
Battery
Vibration damper
Wheel balance weight
Vulcanising agent and stabiliser for elastomers in fluid handling and powertrain applications
<b>Bonding agent for elastomers in powertrain applications</b>
Stabiliser in protective paints
Carbon brushes for electric motors
Solder in electronic circuit boards and other electric applications
<b>Copper in friction materials of brake linings</b>
Valve seats
Electrical components which contain lead in a glass or ceramic matrix compound except glass in bulbs and glaze of spark plugs
Glass in bulbs and glaze of spark plugs
Pyrotechnic initiators
<b>Concentration within acceptable GADSL limits</b>
Other application (potentially prohibited)
Hexavalent chromium and its compounds used as/in
Corrosion preventive coatings
<b>Corrosion preventive coatings related to bolt and nut assemblies for chassis applications</b>
Absorption refrigerators in motorcaravans
<b>Concentration within acceptable GADSL limits</b>
Other application (potentially prohibited)
Mercury used as/in
Discharge lamps and instrument panel displays
<b>Concentration within acceptable GADSL limits</b>
Other application (potentially prohibited)
Cadmium used as/in
Thick film pastes
Batteries for electrical vehicles
<b>Optical component in a glass matrix used for Driver Assistance Systems</b>
<b>Concentration within acceptable GADSL limits</b>
Other application (potentially prohibited)
Nickel used as/in
Component of a surface likely to be routinely touched (eg. handles and buckles), that have a nickel release rate exceeding 0.5µg/cm <sup>2</sup> /week.
Other application (Surface not routinely touched or nickel release rate < 0.5µg/cm <sup>2</sup> /week)
Not applicable
PAHs (Polycyclic aromatic hydrocarbons)
The lubricant / oil contains total PAHs >3% according to IP 346
The lubricant / oil contains total PAHs <3% according to IP 346
Extender oil contains PAHs > 10mg/kg (for tyres only)
Extender oil contains PAHs < 10mg/kg (for tyres only)
Non-tyre application
PAH in lubricating oil
Not applicable