

IMDS Manual for Toyota Options

Version 4.1



INDEX

1. Introduction	3
2. Toyota's Data Collection Procedure	4
A. Toyota develops IMDS data collection for each vehicle, project by project.	4
B. Toyota sends an official request email to suppliers to ask them to submit data of required part numbers.	4
C. Confirmation of our request's contents.	6
D. One request for one vehicle project.	6
E. Workflow between IMDS and Toyota's internal system.	6
3. The part with not issued drawing, or not fixed specification.	8
4. What are special requirements of Toyota?	9
A. Material	9
B. Substance	10
C. Toyota Supplied Part	11
D. Exceptional electronic components	13
E. Plating (In case there is no appropriate public standard).	14
F. Weight	15
G. Supplier data	16
H. Recipient data	17
I. Sending datasheet	19
J. In case of errors	21
5. Attention.	22
A. Metallic materials published in IMDS.	22
B. How to input metallic coated steel flat products.	22
6. Contact.	23

(*)Note:

Meaning of “ Designation” :

**In this manual, the codes specified by Material Standards are called
“Designation” .**

1 Introduction

This manual explains Toyota's suppliers what Toyota's options in IMDS are. (This manual isn't a complete training manual for the International Material Data System (IMDS)).

These Toyota's options need to be used by not only Toyota's Tier 1 suppliers, but also by Tier 2, Tier 3, etc. Therefore, Toyota strongly recommends the Tier 1 suppliers to pass this information to Tier 2 suppliers and so on. If Tier 2 suppliers do not follow Toyota's requirements, Tier 1 suppliers will have to ask their sub-suppliers to correct their data and re-submit new MDS to Tier 1.

Another manual, 'Toyota's IMDS Frequently Asked Questions', is also available in IMDS website www.mdsystem.com, in the 'Public Pages' section, FAQ title. Then, you select 'OEM Specific Info' in the pull-down menu that appears, and search the question: 'Is there any additional information concerning Toyota's Global IMDS Rollout?'.

Toyota would like its suppliers to follow the IMDS Recommendations set up by the car manufacturers (see the chapter 'Recommendations' in the menu after login in IMDS website: www.mdsystem.com). Those documents explain to the users:

- The general structure of a datasheet and the different fields to fill in,
- How to build a datasheet for:
 - Complex parts (like circuit boards, wire harnesses, lighting parts, etc.),
 - Coated metal sheets and coated components,
 - Fasteners,
 - Leather and fabric,
 - Paint and coatings,
 - Etc.

More general information is available under the 'Public IMDS Pages' section in the IMDS website (www.mdsystem.com), with some of the following contents:

- System requirements and the online registration ('System'),
- Training possibilities ('Training'),
- E-mail addresses and phone numbers to contact EDS in case of questions about IMDS ('Contact'),
- Lists of prohibited and declarable substances (GADSL, VDA),
- Frequently asked questions ('FAQ'), and other information of interest.

2. Toyota' Data Collection Procedure

To start with practical explanations on how to submit IMDS datasheets to Toyota, it is important to define what are the most specific characteristics of the Toyota's Data Collection Procedure:

A. Toyota develops IMDS data collection for each vehicle, project by project.

TOYOTA does not request the data submissions to IMDS for ALL the parts that are supplied to us.

Instead, the parts used/fixed in certain vehicle types that TOYOTA focuses on, are requested.

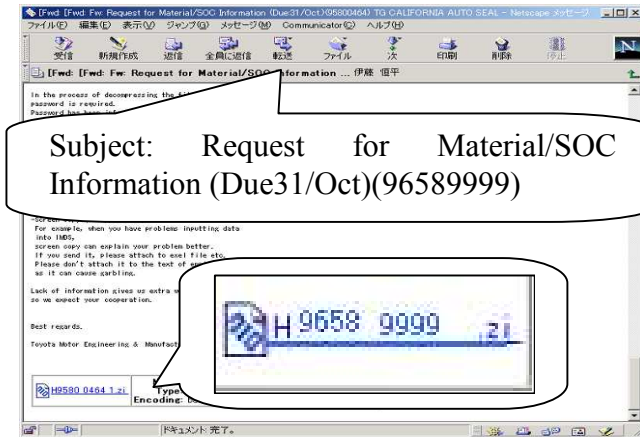
B. Toyota sends an official request email to suppliers to ask them to submit data of required part numbers.

Toyota requests parts information by sending the official request email. Therefore, suppliers only have to submit information when they receive the request.

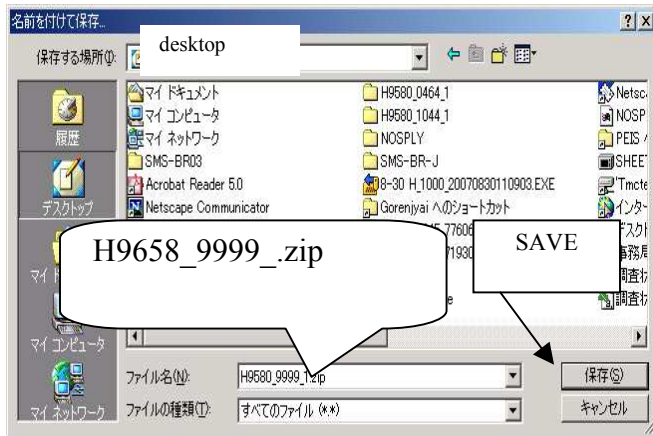
The most important information regarding this official request email are:

- The official request emails are **sent via our in-house system** from the e-mail address: fv-peis@mega.tec.toyota.co.jp and they are addressed to two contact people for each supplier code:
 - **The commercial contact person**, for commercial matters: who does not receive the Part List, but receives the email to be informed about the work that has to be done for the data collection for Toyota.
 - **The IMDS contact person**: who receives the Part List and should organize the data collection and make sure it is done on time.
- The title of this email is normally (please see picture in the next page):
“Request for Material/SOC Information(Due -/-(SC)” .
- The Part List is attached to the request email only to the IMDS contact person. This list shows you the structure of the each requested part. It is sent in shape of ‘zi_’ file.
To open it, please change the extension to ‘zip’, and input the password we informed you in advance.

How to open ZIP file.



- This is an example of official request email.
- Only IMDS contact person receives the Part List.
- Part List is compressed as 'zip' file, and the extension is changed to 'zi_' to avoid being blocked by the firewall.



- Save the attachment in the location you selected.
- When you save it, change the extension from 'zi_' to 'zip'.



- Click the saved zip file to open.



- Password is required.
- Password is periodically changed by us, and informed you by email.
- After you input password, click 'OK'.



- zip file is decompressed, and Part Lists inside can be found.

C. Confirmation of our request's contents



After you received official request email from us, please confirm whether the contents of our request are correct or not.

If you are in cases below, please inform us.

- You found a part which you don't manufacture.
- You found self-supplied part in the structure of the part, but it is actually TOYOTA supplied part.
- You found TOYOTA supplied part in the structure of the part, but it is actually self-supplied part.

During 2 weeks after we send you official request email, we accept information above from you. If you inform us nothing, we believe you can submit data as our request.

D. One request for one vehicle project.



We used to divide the data submission period into 2 parts. One is 'the first request' period, and the other is 'the final request' period. At the beginning of each period, official request email was sent to you.

However, data submission period isn't divided any more. The official request email is sent to you only once for one vehicle project.

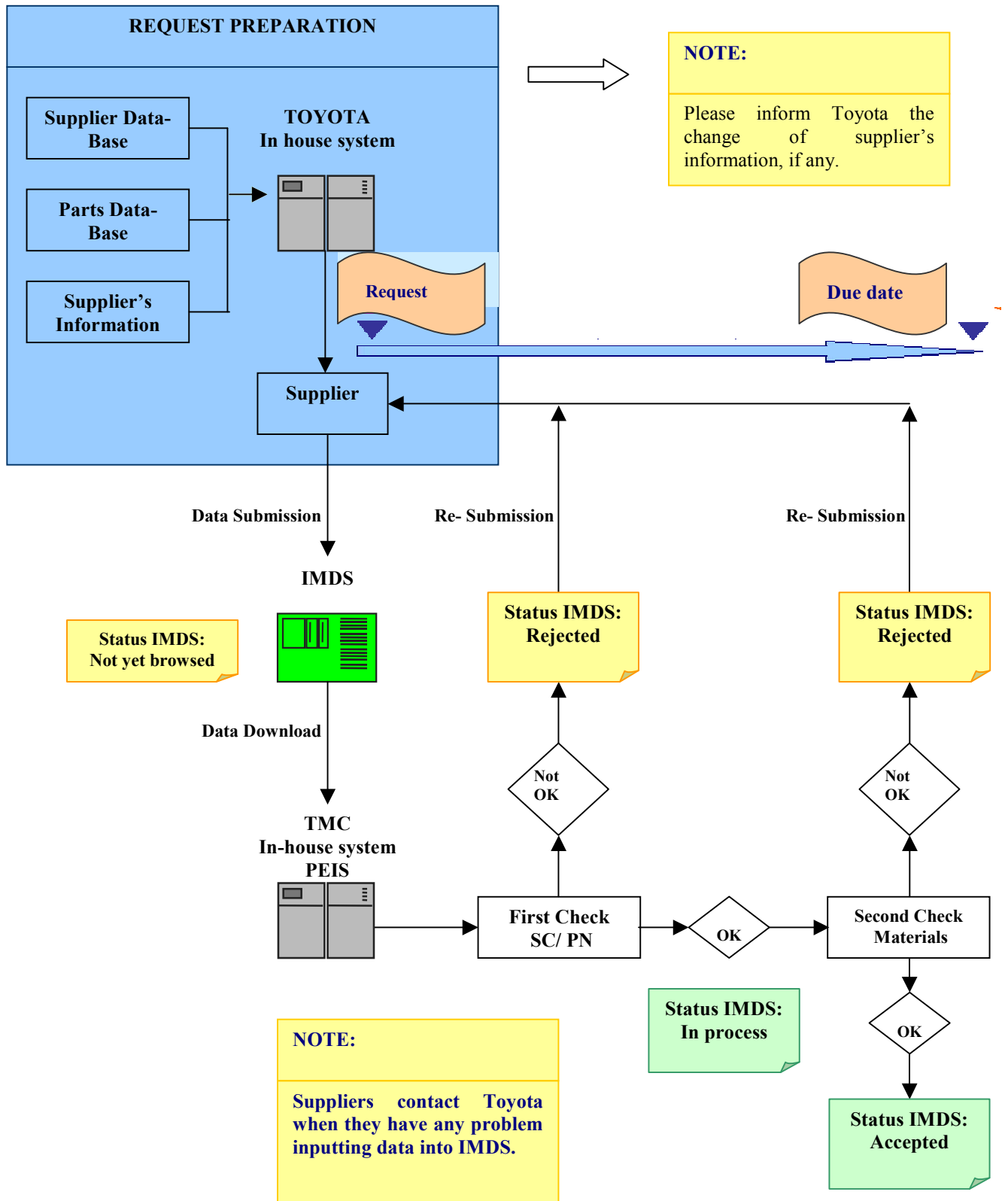


E. Workflow between IMDS and Toyota's internal system

In the next page, you can find the workflow between IMDS and Toyota's internal data collection system.

Each Tier 1 supplier receives the official request email. When the datasheets are submitted, they are downloaded to Toyota Motor Corporation Japan's internal database (called PEIS), then the system checks if they comply with Toyota's requirements.

Toyota IMDS Data Collection Workflow



3. The part with not issued drawing, or not fixed specification

In case you cannot submit your data, because your part's drawing is not issued yet, or the specification is not fixed yet, please contact Toyota's designers.

They'll support you so that you can submit data.



4. What are special requirements of Toyota?

In later pages, you can find the explanation about Toyota's unique way to input data.

A. Material

We recommend to input data by following IMDS Recommendation. For the detail of material data input, please refer to IMDS Recommendation 001.

Reference:

- **IMDS Recommendations in IMDS web-site:**
www.mdsystem.com/ Left menu after login
- **IMDS input Manual:**
www.mdsystem.com/Public Pages/ FAQ/
'OEM's specific info' in the pull down menu/
'Is there any additional information concerning Toyota's Global IMDS Rollout?'

Below are the additional comments from Toyota for each field in material data sheet. (Toyota looks at underlined fields) This explanation can be found in 'IMDS Input Manual', too.

- **Name**: Please input appropriate designation*. Please do not input generic material names here, otherwise the data will be rejected.
(ex: PE, CP, CuAl5)
- **Trade name**: (ex: Thyssen).
- **Standard Material Number**: ONLY for metals (steel, iron, etc.).
- **Symbol**: In case of resins/ rubbers. We check if data comply with Toyota standard TSZ6005.
- **Classification**: We check if classification is right or not.
- **Norms/ Standards**: Public standards (ex: JISG4305, EN10027, EN537).
- **Inhouse norms**: (ex: TSG3200G, TSH6500G)
- **Supplier**: Material supplier (ex: BASF, Thyssen)
- **Remark**: Input generic material name here (ex: polypropylene, steel)

IMPORTANT:

Standard and designation* are necessary. When you are about to send data without them, warning message will appear.

You can neglect the warning message and continue sending the data.

However, the data will be rejected, as standard and designation* are necessary for Toyota to identify the reported material.

B. Substance

Please report 4 heavy metals banned by ELV directive, such as Cr6+, Cd, Pb, Hg, and the substances listed in Toyota standard TSZ0001G.

If reported substance can be found in GADSL list too, it will be automatically highlighted in red.

While making submission in IMDS of the basic substance level, you can use TSZ0001G as reference and input in IMDS the basic substances accordingly to GADSL, as TSZ0001G cannot be selected from IMDS pull-down menu.

So you can search your basic substance in TSZ0001G and then input it accordingly to GADSL criteria in IMDS.

The rest of substances can be reported with the wild card “Miscellaneous”. However, ‘Miscellaneous’ can be reported only up to max 10 % per homogenous material.

The screenshot displays the MDS - MATERIAL DATA SYSTEM interface in Microsoft Internet Explorer. The main content area is titled "Ingredients" and shows a tree view of materials under "PEIS-Example 629337 / 0.01 (Node ID 629337)". The "GADSL" list is selected, and the "S45C" material is highlighted in red. The "Details" tab is active, showing the following information:

Details	Recyclate	Application
Type		Material (MDS)
ID / Version		436857 / 1
MDS Supplier		IMDS-Committee / ILI Metals
Name	<input type="text" value="S45C"/>	(EN)
Trade name	<input type="text"/>	(EN)
Internal Mat.-No.		
Std. Mat.-No.		
Symbol		
Classification		unalloyed, low alloyed
Norms/Standards		<input type="text" value="ISO 10384"/>
Inhouse Norms		<input type="text"/>
Supplier		<input type="text"/>
Remark		<input type="text" value="Carbon Steel"/>
Weight		0 [g]
Development		
Sample Report		No

Buttons for "Tree search" and "SearchResult" are visible at the bottom of the interface.

This is an example of a Material datasheet.

C. TOYOTA Supplied Part

Another unique characteristic that needs to be taken into account in the datasheet submissions to Toyota is the presence of a “TOYOTA Supplied Part” in the request. In the next page you find the Part List your IMDS contact person receives when Toyota needs new data. In the column “Comments”, you can see which is “TOYOTA Supplied Part” .

In this special situation, you have to follow the steps below:

1. Check the Part List attached to the request email from us, and confirm which part is ‘TOYOTA Supplied Part’.
In the next page, you can see the example of the part list.
2. First, make a sub-component (■) data of the TOYOTA Supplied Part. Please input the following fields.
 - “Description”
 - “Part/Item No.”
 - “Measured Weight per Item”
3. Second, add the material data.
You don’t have to create the material data for the TOYOTA Supplied Part.
Please apply the published material data below.
You can search this material data with its ID, 4135099/4.

Name	Remarks	In-house Standard	VDA	Module ID
TOYOTA	Supplied part	TSA1111	7.3	4135099/4



NOTE:

1. Please input the quantity of the TOYOTA Supplied Part.
2. Please don’t input the part number as your company's unique part number, but as Toyota’s part number
3. In case we request the part’s data as a TOYOTA Supplied Part, but you think the part is a self-supplied part, you can input it as a self-supplied part.
4. For basic substance, we prohibit input of “Miscellaneous” over 10%. However, in dummy data (TOYOTA Supplied Part), Miscellaneous is 100%. This is exceptionally allowed, because we replace this dummy data with the data from the supplier who supplies TOYOTA Supplied Part.

Example of the Part List which contains TOYOTA Supplied Part.

Sequential No.	Delivery Part No.	Delivery Part Name	Delivery Part Mass [g]	Engineering Change No.	Part Structure Level	Component Part No.	Component Part Name	Component Part Mass [g]	Quantity/Component Part	Comment	Remarks
1	T55670-02110- C	REGISTER ASSY, INSTRUMENT P.	345WR0348		1	T55670-02110- C	REGISTER ASSY, INSTRUMENT PANEL, CTR		1		
2	T55670-02110- C	REGISTER ASSY, INSTRUMENT P.	345WR0348		2	T55063-02080- C	REGISTER SUB-ASSY, INSTRUMENT, CTR RH		1		
3	T55670-02110- C	REGISTER ASSY, INSTRUMENT P.	345WR0348		2	T55064-02080- C	REGISTER SUB-ASSY, INSTRUMENT, CTR LH		1		
4	T55670-02110- C	REGISTER ASSY, INSTRUMENT P.	345WR0348		2	T55404-02080- B	PANEL SUB-ASSY, INSTR, CTR, FINISH UP		1		
5	T55670-02110- C		348		3	T90467-10203	SCREW		2	TOYOTA Supplied Part	
6	T55670-02110- C		348		2	T55652-02080- A	REGISTER		1		

The delivery part number

This part is Toyota Supplied Part.

TOYOTA Supplied Part

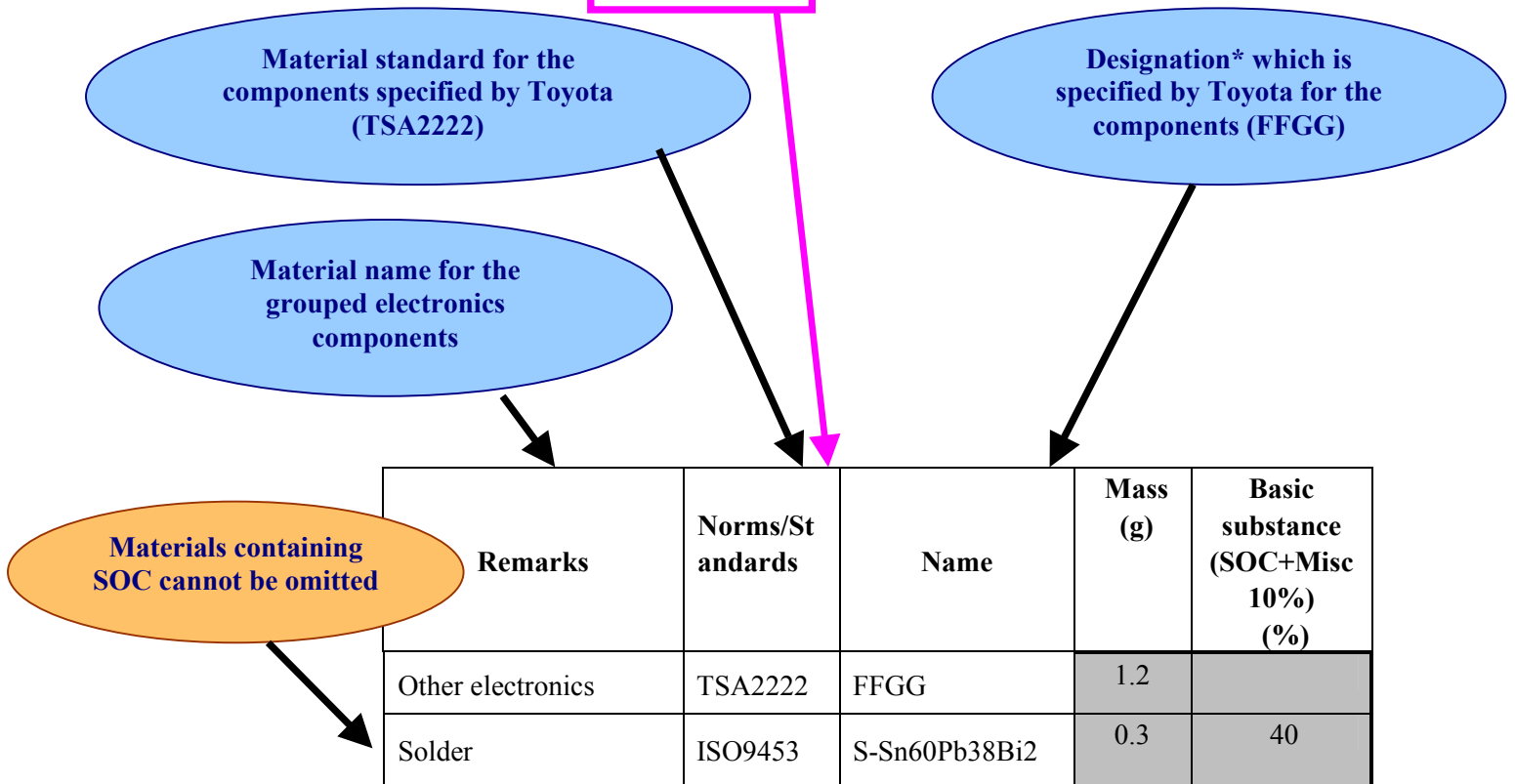
Please read Toyota’s IMDS FAQ for more detailed information regarding the input of a “ TOYOTA Supplied Part” .

D. Exceptional electronic components

In case you are using many light components of the same type, like resistors or condensers, you can input data after compiling these components into one group.

However, you cannot include any Toyota part number into this group. And, you have to enter for the group of electronic components the “dummy standard” “TSA2222” as its standard, and “FFGG” as designation*.

Part Name	Part Number	Remarks	Norms/Standards	Name	Mass (g)	Basic substance (SOC+Misc 10%) (%)
Resistor	8897654321	Other electronics			1,2	
		Solder	ISO9453	S-Sn60Pb38Bi2	0,3	40



You can group the electronic components and materials like shown above in only following cases:

Necessarily-reported SOC	ELV Directive Exemption No. (Ban start timing)	Remarks	Inhouse Standard	Name	VDA
Mercury: Hg	15	Discharge lamps	TSA2222	ELHG	8.1
	15	Instrumental panel displays	TSA2222	ELHG	8.1
Lead: Pb	11	Glass	TSA2222	ELGC	8.2
	11	Ceramic matrix compound	TSA2222	ELGC	8.2
	8	Solder in electronic circuit boards	TSA2222	ELSL	8.1
	8	Solder in electric applications	TSA2222	ELSL	8.2
None	—	Other electronic parts	TSA2222	FFGG	8.1
None	—	Other electronic parts(IC, Semiconductor)	TSA2222	ELSC	8.1

Note:

1. ELSL, can be used only to solder in electric/electronic parts.
2. If the material contains necessarily-reported SOC, please do not use FFGG and ELSC.
3. The 4 SOCs are required to be reported under the circumstances written below:
 - Lead, Chromium (Cr6+), Mercury: more than 0.1 wt%
 - Cadmium: more than 0.01 wt%* Impurities are exempted from the regulations provided in ELV Directive.

E. Plating (In case there is no appropriate public standard)

For the plating, please input data according to the table below.

IMDS input field: 'Remarks'	IMDS input field: 'In-house standard'	IMDS input field: 'Name'	VDA
Trivalent Chromium passivation for Zn/ Zn alloy plating	TSHCRF	TSHCRF- TR	7.3
Chromium- free passivation for Zn/Zn alloy plating	TSHCRF	TSHCRF- FR	7.3
Chromium free Zinc lamella coating (Chromium free Dacrotizing for TOYOTA)	TSHCRF	TSHCRF- DC	7.3

NOTE: You can also use public data issued by IMDS committee.

F. Weight

The consistency in the weight information is very important for Toyota. When you receive a request email, you can find the weight information, which is based on the drawing, in the attached Part List.

Then, while building up your datasheet, you have to fulfil the fields:

- **Measured weight:** Real weight of your assembly or part, measured directly by you.
- **Calculated weight:** Total weight of components and/ or materials that are directly under the reported component, calculated by IMDS.
- **Tolerance (%) :** It is the permitted difference between the measured and calculated weight. In principle both weight should be the same.



<Toyota's weight error check>

1. Toyota believes that you produce the parts based on the drawing, and report the data, by disassemble it.
So, the total weight of all materials should be equal to the calculated weight of the delivery part.
2. In case that the measured weight of the sub-component* and the total weight of its materials is different by over +1wt%, the data is rejected.
(*Usually, they are the sub-components in the lowest level.
3. The data will be rejected if you input the wide 'Tolerance' just to make the 'Deviation' allowed, in the datasheet of the delivery part.
4. 'Measured weight' of delivery part should be within tolerance which is indicated in the drawing.

G. Supplier data

On the screen “Create/MDS/Supplier data”, you find your company name. It is the name of your company as it has been registered in IMDS.

Here, you have to choose the name of the responsible person who will be the contact for the datasheet your company wants to submit. Her or his e-mail address will appear automatically afterwards (as an example, see the screen with the information of the “Sending Company” before the submission of the MDS to TMC).

The screenshot shows the 'Supplier data' form in edit mode. The form fields are as follows:

Company:	T-Supplier
DUNS Number:	-
Contact Person:	Toyota, Test
Telephone No.:	0565-26-2121
Fax No.:	0565-26-2121
E-mail:	test@omega.tec.t-sulier.co.jp
active:	Yes

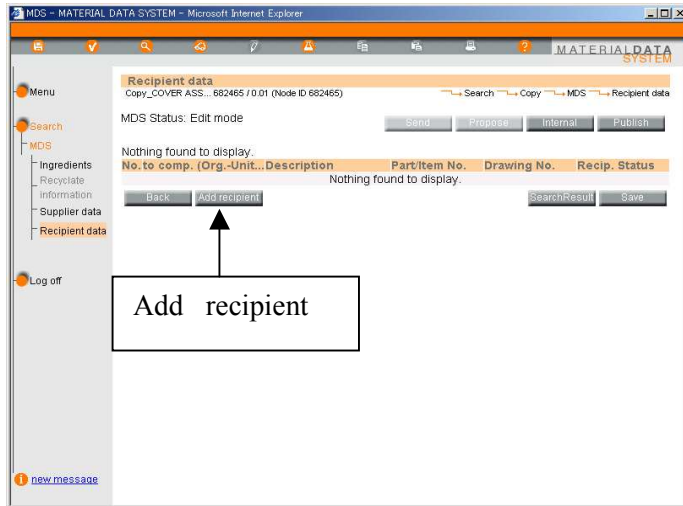
At the bottom of the form, there are three buttons: 'Back', 'SearchResult', and 'Save'. To the right of the form, there is a callout box with the text '1. Save' and '2. Next', with arrows pointing to the 'Save' and 'Next' buttons respectively.

When the right contact person is selected, you can “Save” and press on the “Next” button to go to the next screen “Create/MDS/Recipient data”.

Please note that this is not a specific function of Toyota. We only include this section to this manual for your information and better understanding.

H. Recipient data

In this page, you input not only recipient, but also part number, Engineering Change No, and your supplier code.



- Press on the 'Add recipient' button.



- You'll see the 'Company' page.

Here, you can search the recipient.

- Input 'T' or 'Toyota' in the 'Company Name' field.

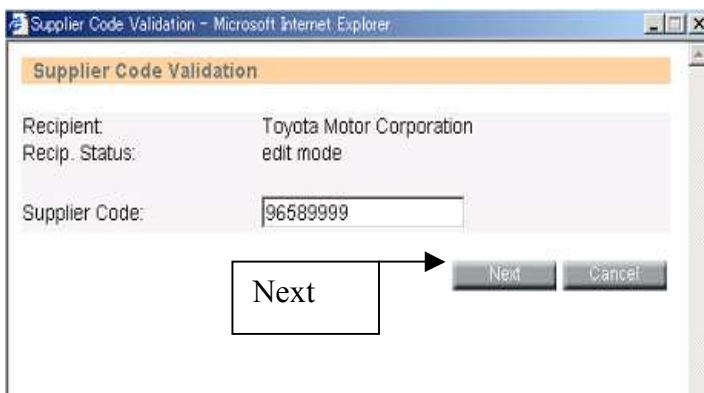
- Press on the 'Apply' button.

- You get a list of companies.

- Select

'Toyota Motor Corporation' (ID:10674)

- Press on 'Apply' button.



- The left screen appears.

- Input your supplier code.

(Your supplier code is indicated in the Official request email from us.)

- Press on 'Next' button.

- The screen in the left appears.

- Please input;

Part /item No.*

Click 'search', and apply the part number. Only when you cannot find the part number in the result of 'search', please input the part number manually. (For the detail about part number, please refer to the explanation below.)

Description

'Part Name' indicated in the Part List attached to the official request email from us, or in the drawing.

Drawing Change Level*

It is indicated as 'Engineering Change No.' in the Part List attached to the official request email from us, and in the drawing.

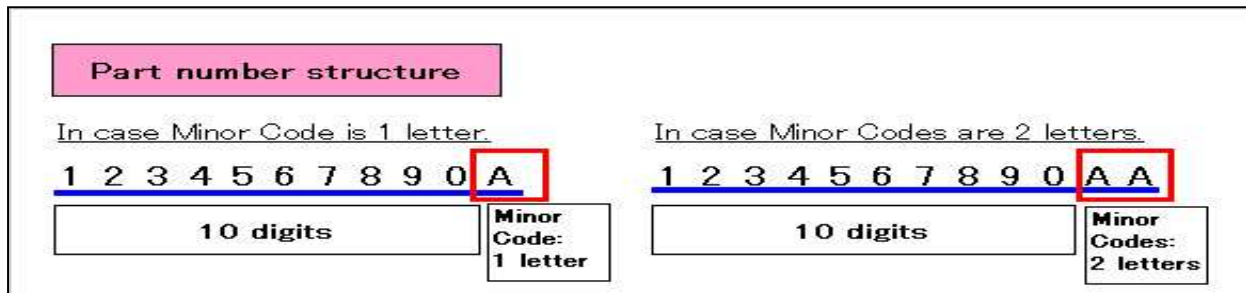
This information is necessary for us.

- Press on 'Change' button.

(*) The detail of part number

The Toyota part number is composed of 10 digits numbers and 1 or 2 letters (if any). These letters are called 'Minor Code', which is upgraded when Engineering Change is given to a part. Therefore, **part with Minor Code A and part with Minor Code B are different** from each other. For Toyota, it is very important that you **submit the data with the requested Minor Code**.

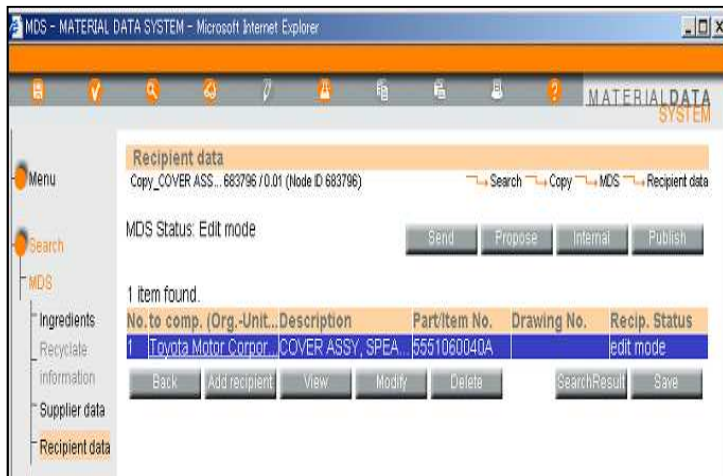
For further explanation over part number structure, please read below chart. When typing the part number by yourself, you should omit the "T" preceding the part number in some cases, the "-" separating the part number into 2 groups (used to ease reading), and the blank before the Minor Code.



(*) In case there is no Engineering Change No.

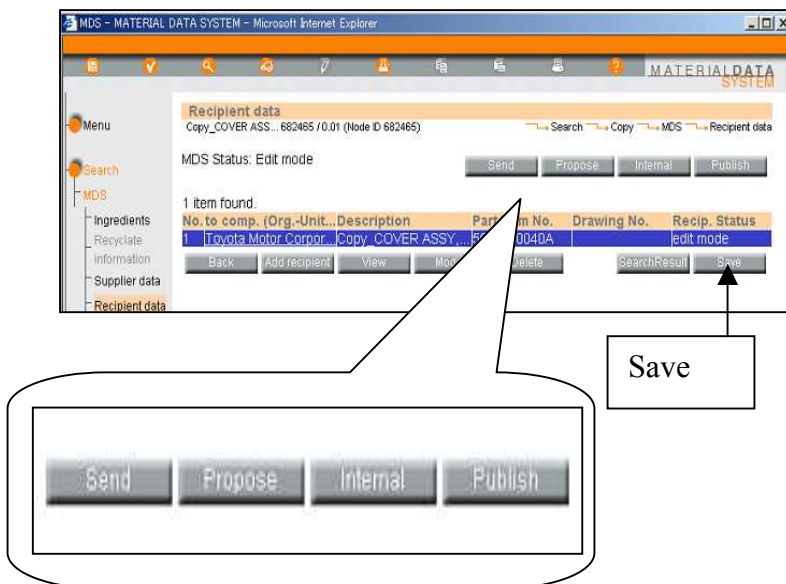
If the drawing is the newly released one, and Engineering Change No is not indicated in it, please input data like below:

- In case you're sure for which vehicle type the part is, please input 'XXXWS0001' (XXXW means vehicle type. Please change it accordingly).
- In case you're not sure for which vehicle type the part is, please input 'PEISS0001'.



- You get back to this screen.
- The information you input is shown here.

I. Sending datasheet



- When you have filled in the supplier code, the part number etc, you get back to the main 'Recipient data' screen.

- Press on the 'Save' button.

- To send your data, please press on the appropriate button for your data submission.

Send

To send your data to one supplier which you selected.

Propose

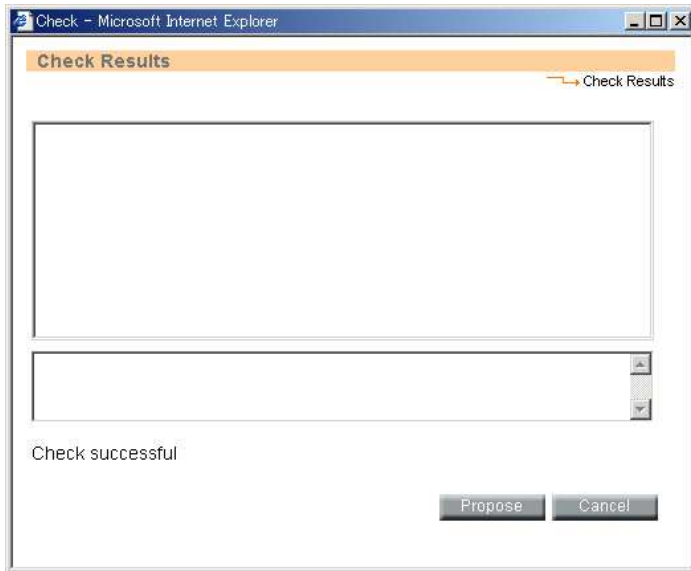
To send your data to several suppliers you selected.

Internal

To release your data internally.
(This process is needed for module data only)

Publish

To release data to all IMDS users in the system.



- This screen tells you the result of error check.
- If your data is complete, this screen is empty like the left.
If the data has to be corrected, description of the errors or warning is shown.
- To correct the found errors or warnings, you just have to select them one by one, and press the 'Correct' button and proceed accordingly.

NOTE:

The warnings do not avoid the sending, but they remain in the datasheet as a reference for the recipient company. We'd like to ask you to correct all the warnings, because they refer to information that is important for Toyota.

J. In case of errors

Once the datasheet is submitted into IMDS, the status is given to each data accordingly to the process of our error check procedure. (please see the diagram in page 7 of this document).

The meaning of each status:

1. Not yet browsed: our system has not opened your MDS yet.
2. In process at recipient: your MDS is under error checking.
3. Accepted or rejected: the error checking was finished.

In case your datasheet results in rejection, you will receive an email from the address fv-peis@mega.tec.toyota.co.jp. By this e-mail, you will be informed of the rejection of your datasheet.

If you received this email, please check which error code was given to your rejected data, in 'Sent' page in IMDS. There, you can find your data with the status. Click the status; recd(rejected), then the error code will appear.

For the meaning of each error code, you can read the 'Toyota Error Code List'. This list is available in IMDS website www.mdssystem.com. There, you enter in the 'Public Pages' section, and then select 'FAQ' from the left Menu. Later, you select 'OEM Specific Info' in the pull-down menu that appears, and search the question 'What do the **Toyota Error codes** mean?'

5. Attention

In case you input specific data like below, please follow the advice written in this chapter.

Please note that this is not a specific function to Toyota.

We only include this section to this manual for your information and better understanding.

A. Metallic materials published in IMDS

For several metallic materials manufactured to public norms or standards, please attach/refer to published data in IMDS.

These data are registered in IMDS with supplier name: 'IMDS-Committee', 'IMDS Committee/ILI Metals', and 'Stahl-und Eisen-Liste'.

For the detail, please refer to '3.4 Material' chapter in IMDS Recommendation 001, and IMDS Recommendation 007.

B. How to input metallic coated steel flat products.

As for metallic coated steel flat products, please input the data of metallic coating and base material separately. Otherwise, the data may be an error.

Part	Item	Norms/Standards	Name	Measured Weight
Metallic coated steel flat product	Base material	Norms or Standard for base material	Designation* for base material	Base material's actual weight
	Metallic coating	Norms or Standard for metallic coating	Designation* for metallic coating	Metallic coating's actual weight

<Example>

Part	Item	Norms/Standards	Name	Measured Weight
Bracket	Cold rolled steel sheets (base material)	EN10326	DX51D	89g
	hot-dip zinc coating (metallic coating)	EN10292	+Z100	1g

6.Contact

1. If you have questions on the general usage of IMDS, please contact EDS directly:

- For suppliers in **Europe**:
IMDS Service Centre in Europe:
Monday through Friday
8am to 4.30pm(GMT+1)
+36 1 298 1536
imds-eds-helpdesk@eds.com

- For suppliers in **Japan**:
The Japan IMDS Service Centre:
Monday through Friday
9am to 5pm(GMT+9)
+81 3 3797 4212
jpimdshd@eds.com

2. If you have questions on Toyota's specific options, please contact:

- For suppliers in **Europe**(If your supplier code starts with '9658'):
Contact: Ms. Eva Hoffmann
imds@toyota-europe.com
Tel: 00 32 2712 17 34.

- For suppliers in **Japan**(If your supplier code starts with '1000'):
Contact: Toyota Motor Corporation
PEIS Head Office
fv-peis@mega.tec.toyota.co.jp

- For suppliers in **South Africa**(If your supplier code starts with '9558'):
Contact: Toyota SA Motors(Pty)Ltd
Ms. Shireen Laher
slaher2@toyota.co.za
Tel:+27319102386
Fax: + 2731 9025760

- For suppliers in **Thailand**(If your supplier code starts with ‘9608’):
Contact: Toyota Motor Thailand co., LTD.
Mr. Athipote Janklin
ajanklin@toyota.co.th
Tel: 662 386 1933
Fax: 662 386 1885

- For suppliers in **Thailand**(If your supplier code starts with ‘9984’):
Contact: Siam Toyota Manufacturing Co., Ltd.
Mr. Ekkasith Oepasathien
ekkasith@siamtoyota.co.th
Tel: (66)0-3821-3451-5 ext 121
Fax: (66)0-3821-3447-8

- For suppliers in **Thailand**(If your supplier code starts with ‘DUM6’):
Contact: Hino Motors Manufacturing (Thailand) Ltd
Mr. Pinprem Leelapongwattana
safetystaff@hinothailand.com
Tel:+6638-454-577ext220
Fax : +6638-454-571

- For suppliers in **Indonesia**(If your supplier code starts with ‘Z008’):
Contact: Toyota Motor Manufacturing Indonesia
Mr. Hendrick Kurdianto
hendrick.kurdianto@toyota.co.id
Tel: +62 21 6515551 ext 2651
Fax: +62 21 6521610

- For suppliers in **India**(If your supplier code starts with ‘DUM7’):
Contact: Toyota Kirloskar Auto Parts pvt. ltd,
Mr. Raghavendra J
raghugowda@tkap.co.in
Tel: 080 728 7141, 728 7143 to 7287147 ext 1107
Fax: 080 728 7142

- For suppliers in **India**(If your supplier code starts with ‘Z002’):
Contact: Toyota Kirloskar Motor, INDIA
Mr. Vijaya Kumar
VijayaKumarK@tkm.co.in
Tel: 6629 2272/2178
Fax: 0091 80 72 87076~77

- For suppliers in **Philippines**(If your supplier code starts with ‘Z006’):
Contact: Toyota Motor Philippines Corporation
Lilia.Cabauatan@toyota.com.ph
Tel: (632) 825-8888 local 8569
Fax: (632) 6800-5081.

- For suppliers in **Philippines**(If your supplier code starts with ‘DUM5’):
Contact: Toyota Autoparts Philippines, Inc.
Mr. Jesurenzo A. Albores, R.ChE
iso_ppe@tap-toyota.com.ph
Tel: (6349) 541-2888 local: 516 or 675
Fax:(6349) 541-2778

- For suppliers in **Vietnam**(If your supplier code starts with ‘Z005’):
Contact: Toyota Motor Vietnam Co., Ltd
Mr. Luu Tri Toan
prtoanlt@toyotavn.com.vn
Tel: (84)-211-868100~12 ext 2305
Fax: (84)-211-868118

- For suppliers in **Malaysia**(If your supplier code starts with ‘Z007’):
Contact: Assembly Services Sdn Bhd
Mr. Sofian Bin Isa
sofiani@toyota.com.my
Tel: 03-51232541
Fax: 03-55193971